

Student Life Center will open in August



A project more than 20 years in the making will soon be complete. K-State at Salina's Student Life Center will be soon after classes begin this fall. The 33,000 square foot building will be home to the Recreational Services and Student Life offices.

The SLC features a basketball gym, second-level running track, racquetball courts, a cardiovascular area, an area with free weights, an aerobic/fitness area and exercise equipment as well as a student lounge with a computer station where students can hang out.

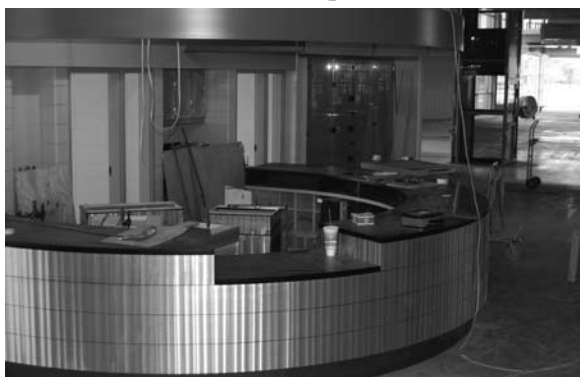
The SLC is open to the public with discounted membership rates for

K-State alumni and their families.

An official ribbon cutting ceremony will be scheduled once the building is complete and special activities for students are in the works. The alumni haven't been forgotten. A special event is being planned to give you time to enjoy the building and one another's company. More information will follow when the details are finalized.

"This is more than just a building," said Dean Dennis Kuhlman. The Student Life Center is a part of a vision enhancing the learning atmosphere for K-State at Salina students. It's a dream come true for many people - including me. This project has been a priority for many years and we're excited to finally see it nearing complete. Our donors deserve a big thank you, because without them we would still be in the dreaming stage."

Above: The view from the northwest.
Left: The friendly front-desk staff will greet students and visitors



fyi
for your information

Keep an eye out

While the floors finish drying and offices are being prepared for the move, plans are being made for an alumni event to be held in the Student Life Center.

Keep an eye out for more information about the event, which will allow you an opportunity to experience the new building as well as enjoy one another's company and exchange stories.

Of course, you don't have to wait for an invitation to stop by campus. Visit us any time to see how much the campus has grown since you graduated - whether it's been 4 months or 40+ years!



The 1/8 mile, second-level running track is accessible by stairs and by chair lift.

message from the dean



In this era of bad news and economic stress, let me assure you that K-State at Salina is alive and well!!! The largest excitement this

year will be the opening of the new Student Life Center which has been on my agenda for the last 12 years! This accomplishment is a direct reflection of the private funding support received from you. Thank you!

Even with the cost of a major building project funded by private fund raising, it is important that we not lose sight of the other important needs that are being met through private fundraising efforts. K-State at Salina continues to have a critical need for flexible enhancement funds and for scholarship support. Enhancement funds are most desirable as they allow the changing needs of the College to be met on a timely basis. These needs may range from new equipment for a laboratory, student projects or competition team support, or a scholarship to support financially struggling students. Of course, scholarships are always an ideal mechanism to provide financial support for students while providing a lasting memorial to a loved one. In this age of accountability, I wanted to provide you with a summary of private fund use for calendar year 2008.

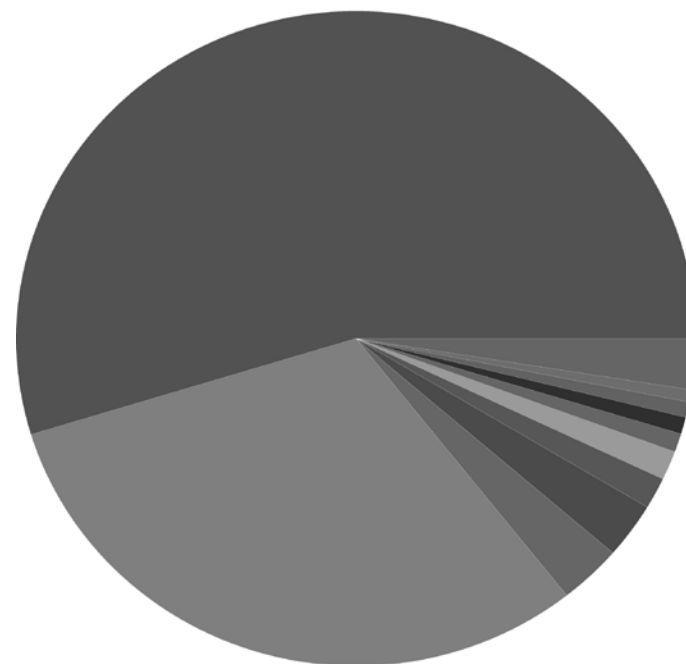
In calendar year 2008 more than \$1.2M of private funds were expended at K-State at Salina. Of this amount, 55% (\$677,535) went directly to students in the form of scholarships paid from dedicated scholarship fund contributions and an additional 31% (\$382,502) was expended in support of student projects and competitions paid from

enhancement fund contributions. There are numerous unexpected needs that arise which provide examples for the need for enhancement funding support. For example, student competition teams are often required to provide proof of insurance before they are allowed to compete. State statute does not allow use of state funds (including tuition revenue) to purchase insurance, thus requiring use of private foundation funds to provide insurance coverage (\$37,063 in 2008) paid from enhancement fund contributions. It is also important to recognize our most outstanding faculty. Faculty are the heart and soul of any university, and it is important to recognize and reward those who are "Beyond Ordinary." Outstanding staff make the College operate efficiently and provide the learning atmosphere that supports our students and their quest for learning. Faculty and staff recognition accounted for 0.61% (of expenditures, paid from enhancement fund contributions). The K-State at Salina TechnoCats summer softball program was initiated five years ago to support young women who desire to compete at the collegiate level, to introduce technology and aviation to an additional group of potential students, and to place a group of young women in a public setting to expand the presence of K-State at Salina. This program has resulted in additional student

enrollment and has facilitated the introduction of the Family Studies and Human Services degree program on the K-State at Salina campus. This investment accounted for 0.91% of expenditures, paid from enhancement fund contributions. Other details may be found in the graphic of 2008 expenditures, but it is safe to say that our number one priority remains our students and support of their goals and activities. Thank you for your contributions. Please take an opportunity to stop by our K-State at Salina campus to let us show you our pride and thank you for your support! Go Cats!
Dennis K. Kuhlman
Dean

Spending by Category - Last year

1/1/2008 through 12/31/2008



Scholarships	54.74%
Student Projects	30.90%
Insurance	2.99%
Development	2.75%
Student Trips	1.55%
Educational Materials	1.44%
Technocats	0.91%
Uncategorized	0.84%
SLC Construction	0.76%
Faculty & Staff Recognition Visibility	0.61%
Other	2.52%
Total	\$1,237,708.26

Two participate in Air Race Classic 2009

Kali Hague, Overland Park senior, and **Merritt Hitchcock**, Shawnee senior, followed in the footsteps of famous aviatrixes such as Amelia Earhart by participating in Air Race Classic 2009 - a historic all-female, cross-country air race - in June. The four-day, 2,714-mile tradition celebrated it's 80th anniversary this year. ARC 2009 started in Denver, Colo., with stops in Liberal, Kan.; Sweetwater, Texas; Lufkin, Texas; Russellville, Ark.; Grenada, Miss.; Sparta, Tenn.; Jacksonville, Ill.; and Racine, Wis.; and finished in Atlantic, Iowa.

Preparations for the race focused on tracking the weather and packing - for themselves and for the Cessna 172 G1000 from the K-State at Salina fleet of 40+ aircraft. Packing light was a challenge because they had to start with a full fuel tank - and equipment, charts, engine oil, the "to-go" cleaning kit provided by the maintenance crew, water, food, and clothes. The two wore matching purple tops each day to show their Wildcat pride.

Niki (Mondek) Gaskins ('06), who participated in ARC 2007, mentored the competitors as they prepared.

Jan Burton, ('77) hosted a reception in the pilots' honor the night before the race. Burton also supplied footage of the duo's take-off that can be seen on their blog: www.kalimerrarc09.blogspot.com.

Robin (Mikols) Laws ('07), who participated in ARC 2006 and ARC 2007, helped keep their blog current. The ladies' endeavor found them fame in the both the Denver Post and the front page of the Kansas City Star. Hague and Hitchcock received the fourth place award for the fourth leg of the race - Lufkin, Texas, to Russellville, Ark. - and received \$20 and a bronze charm. They placed fifth among the collegiate teams and placed 19th out of 32 overall teams.



L to R: Niki Gaskins, Merritt Hitchcock, Kali Hague, and Dr. Kurt Barnhart, aviation department head, before Hitchcock and Hague's take off.

K-State at Salina now more "social"

Join us, follow us, become a fan, or view us! K-State at Salina is now on:
facebook Get info on current events, link to other K-State at Salina groups, and connect with old friends. www.facebook.com/kstatesalina
YouTube Watch videos of campus happenings, student organizations, class lectures and more. www.youtube.com/kstatesalina

twitter Get brief updates on what's happening on campus. <http://twitter.com/kstateatsalina>
flickr View photos of events, student life, construction, and more. flickr.com/photos/k-statesalina/



bits & pieces

Approximately 75 K-State at Salina students traveled to Chapman, Kan., to help reconstruct the town after it was hit by a tornado. They were there while ABC's *Extreme Makeover: Home Edition* was filming.

The university's first Diversity Powwow was held on our campus in April. It featured authentic American Indian food, art, dancing, and drums. **Wilma Mankiller**, the first female principal chief of the Cherokee Nation, was the keynote speaker at the event and also lectured earlier in the week about women in leadership.

The U.S. Air Force Office of Scientific Research awarded a \$380,240 grant to K-State at Salina in April. It will be used to develop mission planning for the unmanned aerial systems program. The grant runs through March 2010.

This spring, K-State at Salina conferred 101 degrees on 67 students.

Arts, sciences and business:

9 associate's, 9 bachelor's

Aviation:

8 associate's, 14 bachelor's

Engineering Technology:

31 associate's, 30 bachelor's

John Goglia, senior vice president of JDA Aviation Technology Solutions, presented an ADVANCE Distinguished Lecture in April. An award to **Raylene Alexander**, assistant professor of aviation, made the lecture possible.

beyond today

Mark your calendars for...

September 12
Student Life Center Open House
see page 1 for details

September 23
President's Inauguration
2 p.m. McCain Auditorium
Manhattan Campus

October 19
Senior Day

October 21
UAS Program Office ribbon cutting

December 11
Graduation
SLC

January 29
Chili Cookoff

Feb 28
GlobalFlyer 5-year anniversary
event

March 29
Junior Day

April 24
Open House

May 9
Graduation
SLC

above & beyond

We'd like to recognize a few K-State at Salina faculty, staff, and students who strive for a beyond ordinary educational experience.

SIFE competes at Nationals

Students in Free Enterprise had a busy year spreading entrepreneurial spirit at home and on the road. The SIFE team won the Regional Competition in Dallas in April, which allowed them to compete at the National Exposition in Philadelphia in May. "We had a blast competing, attending the career fair, networking, and exploring Philadelphia," said Kathy Brockway, associate professor of arts, sciences, and business and the team's

sponsor. "Our team represented K-State at Salina at its finest." SIFE also hosted "Entrepreneurship-ology 2009: A week for the opportunity-obsessed." Entrepreneurs presenting during the event included Roy Applequist, Great Plains Manufacturing, Salina; Tom Hanna, Rose America Corporation, Wichita; Trace Walker, Blue Beacon, Salina; Lee Young, Salina Vortex, Salina; and Skip Yowell, JanSport, San Leandro, Calif.

CRJ sim flies students beyond classroom

Student pilots can now fly the world without ever leaving the classroom. The new Canadian Regional Jet 200 flight training simulator is fully functional and can replicate flights from airport to airport with full systems and navigation. Students have complete control over engine starts, system checks and tests, failures, emergency procedures, flight management systems and navigation. The sim also trains students to transition between smaller aircraft to larger, more complex aircraft. "The sim will enhance the learning experience for our students in the professional pilot and aviation maintenance programs," said Dr. Kurt Barnhart, head of the department of aviation. The sim has been integrated into the crew resource management

class and future plans include developing a class specifically on the CRJ 200 systems for pilots and training maintenance students in turbine aircraft ground operations, including engine start and taxi procedures. "The CRJ 200 sim is a step up from our previous flight simulation capability," said Barnhart. "It ensures that our graduates will meet the needs of the air transportation industry for years to come."



A flight instructor explains the sim's features to PPIL students

Dr. Raju Dandu, professor of engineering technology, was named a Zone III Outstanding Campus Representative by the American Society for Engineering Education. ASEE Zone III includes 13 central US states and two Canadian provinces.

Joseph Revell, Topeka, and Kate Fraser, McPherson, were two of the 14 K-State students who received the 2009 Dean of Student Life Outstanding Graduating Senior Award. Revell graduated in May and Fraser will graduate in December.

ET students find creative use for gaming system controllers

The Mini-Baja Team had a "Wii" bit of success this year thanks to some members of Dr. Greg Spaulding's senior design course. Spaulding, professor of engineering technology, teaches a course in which seniors select, define and analyze a mechanical engineering project in the fall semester, then develop and implement it in the spring. Four of the students teamed up to improve the suspension system for Mini-Baja Team's car, a four-wheel off-road vehicle they design and build for competitions. The students had to know how the old suspension system actually performed before they could create a new design to improve it. That's when they got a "Wii" bit of an idea: use the remote controllers from the popular game system to get some key data about the old suspension system," Spaulding said. "Part of the problem was they needed to

sense acceleration, but to do this they needed something wireless and something relatively inexpensive. They found that Wii controllers had all these properties." The Wii remote has an MEMS accelerometer, an infrared camera and a Bluetooth communication system that can capture and transfer data via its wireless link, said Dr. Raju Dandu, professor of engineering technology and Mini-Baja Team coach. "The 'Wiimotes' were installed on last year's car to measure the G-forces absorbed and transmitted by the suspension system," Dandu said. "The students and team members consulted with a professional in off-road recreation vehicles about the suspension analysis results so they could select the appropriate shocks and springs with ease of adjustment for the new vehicle's suspension

system." A fifth member of Spaulding's class who is working on another project team helped the project team with computer interface issues so the wireless data collection would work. "It looks pretty weird to have these things strapped to the car, but it works," Spaulding said. "It was a very creative idea and I was impressed. I got a Wii for Christmas and am enamored of its technology. When my students came up with this application, I thought it was really cool." Students working on the project, all seniors in engineering technology, were: Michael Drach, Hutchinson; Clayton Wonsetler, Inman; Christopher Perdue, Topeka; and Reid Rains, Wallace. Justin Kuntz ('07) helped the team with computer interface issues.

FAA issues COA for K-State at Salina's UAS program

The Federal Aviation Administration has issued a Certificate of Authorization to K-State to fly the Aerosonde®, an unmanned aerial vehicle operated by Flint Hills Solutions LLC, over Crisis City. Crisis City is an emergency response training area that is part of Great Plains Joint Regional Training Center located adjacent to the National Guard's Smoky Hill Weapons Range. The COA comes from the combined efforts of K-State at Salina, Flint Hills Solutions, and the Salina Airport Authority. The ability to fly over

Crisis City opens the door to more extensive training in search and rescue operations. The authorized unmanned flights have already begun. "This is a major step in supporting our UAS projects and will be extremely helpful as we continue to partner with the public and private entities to apply our research capabilities to this developing technology to save lives and enhance emergency response," said Dean Dennis Kuhlman. A COA is a waiver that authorizes

limited UAV flight in the National Air Space as the FAA develops regulatory airworthiness, collision avoidance standards and certification requirements for unmanned flight. The next step for K-State is to apply for Emergency COAs allowing us to fly Flint Hills Solution's Aerosonde® in different locations across the state, including weather-related disaster sites, within a matter of hours. For more information about K-State at Salina's UAS program, visit www.salina.k-state.edu/uas/

Brian S. Richter, Salina, has been initiated into the Phi Kappa Phi honor society. He graduated in May with an associate's degree in engineering technology.

Dr. Les Hannah was one of four K-State faculty to receive the 2009 Presidential Award For Undergraduate Teaching Excellence. He is the assistant dean of academics and an associate professor of English.

Eric Shappee, associate professor of aviation, was awarded The Marchbanks Memorial Award For Teaching Excellence; Dr. Jung Oh, associate professor of arts, sciences and business, received The Rex and Jean McArthur Family Faculty Fellow Award.

beyond the diploma

brief bio

DEGREE

Associate's degree in civil engineering technology from Kansas Technical Institute

FAMILY

Married to wife Linda for 40 years, 2 daughters, 3 grandchildren

RECENTLY READ

The Worst Hard Time by Timothy Egan

HOBBIES

gardening, babysitting grandchildren

MEMORY

Wondering if he'd have to push the '55 Ford back to campus after a surveying expedition

INFLUENCE

Charles "Charlie" May

ADVICE

Always treat people with respect. Set obtainable goals.

Kuhn's bridges carry him to K-State at

Robert "Bob" Kuhn, 2009 Alumni Fellow, retired from the construction industry four years ago and presently is a consultant for Ark Wrecking Co.

A native of Ellis, Kan., Kuhn attended K-State for two years before serving two years in the U.S. Army.

He took general courses on the Manhattan campus with the goal of becoming a civil engineer and working in the construction industry.

After being discharged, he worked in construction where one project led to a chance meeting with Charlie May, head of the civil engineering technology department at the time.

As May remembers it, "It must have been in 1970 or 1971 when I took a group of students to a construction site on I-135 to observe some of the work going on while they were constructing the bridge across I-70.

"So there we were, a group of atypical students and their instructor looking with fascination at a bridge being constructed. We were discussing some of the aspects of building forms to support the concrete bridge deck as it was placed when a young man came away from the construction workers and approached us.

"We explained to him that we were from Kansas Technical Institute. We told him about the



types of programs the school offered and he became interested. I don't remember how long it was before he enrolled, but when he came aboard, he came with determination."

Kuhn remembers that day as well. "Those few moments with Mr. May on that bridge over I-70 north of Salina on a cold winter day changed my direction," he said.

While taking classes, Kuhn was a full-time student, was active in the SGA serving as vice-president and student coordinator, and held a full-time job driving to Denver and back for Graves Trucking.

One of his favorite memories of his school days involves a different kind of truck. "We used a '55 Ford for a surveying truck because it was in such poor condition we could hardly hurt it," Kuhn said. "But if you went out to survey in it, it was understood that you may have to push it back – part of the surveying party's responsibility."

After graduating in 1972, Kuhn was employed by Utility Contractors Inc., a subsidiary of Martin K. Eby Construction in Wichita, Kan. After serving in various engineering and management positions Kuhn was

Salina, beyond

transferred to Oklahoma as President and Area Manager of the Oklahoma operations. He later served in the same capacity for Sherwood Construction of Oklahoma, Inc.

After a few years as a partner with a construction company Kuhn purchased Ark Wrecking Co. of Oklahoma, Inc., which performs demolition and environmental work in a five-state area. In 2005, after successful expansion of the market area and growth of the company, he sold the company to two employees.

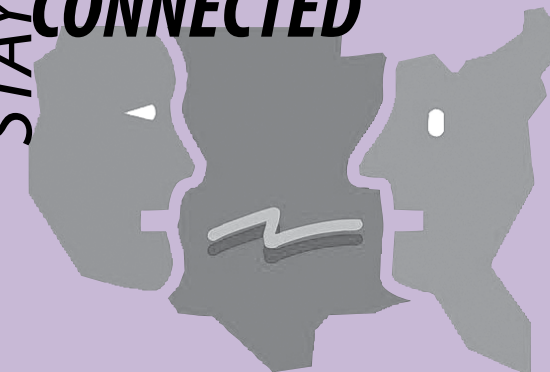
Kuhn has this advice for students, "Always treat people with respect. In a ditch digging company the ditch digger is as important to the success of the organization as the CEO, or maybe more important. Every person has something to contribute." He also suggests that students "set obtainable goals."

"Let's say you want to be a politician," he said. "You don't come out of school with the intent of becoming president of the United States. You start out running for city council, then maybe mayor, then state senator. You learn from each experience and use it to move to the next level. If you have a setback, lose the state senate seat, don't quit. Try again, be persistent and someday you may be President."

"I have set goals throughout my career and have managed to achieve most of them," he said. "Excluding my pride in my children and grandchildren, which I consider my greatest achievements, I consider my friendships with the people I worked with over the years a very important accomplishment."

He and Linda, his wife of 40 years, reside in Broken Arrow, Okla. They have two daughters and three grandchildren.

STAY CONNECTED



Alumni Relations

Natalie Blair: 785-826-2642
alumni@salina.k-state.edu
www.salina.k-state.edu/alumni

Dean's Office

Dennis Kuhlman: 785-826-2601

Development

Mark Friesen: 785-826-2609

Career Services

Lucy Kollhoff: 785-826-2623

Continuing Education

785-826-2633

Admissions

785-826-2640
800-248-5782 (toll free in Kansas)

K-State Alumni Association

800-600-ALUM (2586)
785-532-6260
www.k-state.com

Website: www.salina.k-state.edu
facebook: facebook.com/kstatesalina
YouTube: youtube.com/kstatesalina
twitter: twitter.com/kstateatsalina
flickr: flickr.com/photos/k-statesalina



"Always treat people with respect."



K-State at Salina
2310 Centennial Rd.
Salina, KS 67401-8196

Nonprofit Organization
U.S. Postage
PAID
Permit #525
Manhattan, KS 66502

ADDRESS SERVICE REQUESTED

What was formerly “current” has now gone “beyond.”

This re-formatted alumni newsletter can be found in your mailbox in the summer and in your inbox in the winter. Make sure you get it! Send your email address to us at:

alumni@salina.k-state.edu.

Or check the website at www.salina.k-state.edu/alumni.

beyond graduation

1977

Frank Kopenec became a grandpa for the first time on June 3, 2009. Landon Levi Olsen was born in Phoenix, Ariz., to Frank’s daughter, Andria, and her husband, Kyle. Frank’s son, Chris, and his wife, Aleiva, live in Lewisville, Texas. Frank and Nancy, his wife of 33 years, live in Charlotte, N.C., where Frank works for Ultrablend, LLC.

2001

Melisa (Woods) Nugent and her husband, John, had a baby girl on May 25, 2009. Melisa is an account manager at PIM Aviation Insurance in Wichita.

2006

Chris Laws began working on his M.S. in the Aviation and Space option at Oklahoma State University in August 2008.

2007

Robin (Mikols) Laws began working on her M.S. in the Aviation and Space option at Oklahoma State University in August 2008.

2009

Nick Mallare married Natalie Marie Jones on June 17, 2009. Nick is a software developer for SPIDERTel, Inc., in Kansas City, Kan.

DROP US A LINE!

We’d love to know what you’re up to — and so would your classmates!

Send us news of job changes, weddings, births, deaths, retirements and other significant updates! Be sure to include your name, class year and how we can contact you!

E-mail

alumni@salina.k-state.edu

Online

www.salina.k-state.edu/alumni

Mail

Alumni Relations
2310 Centennial Rd.
Salina, KS 67401

In memory of **Heath Van Handel** ‘99 (9/05/1972 - 4/8/2009) and **Jarod Zoglmann** (4/12/1986 - 7/13/08).