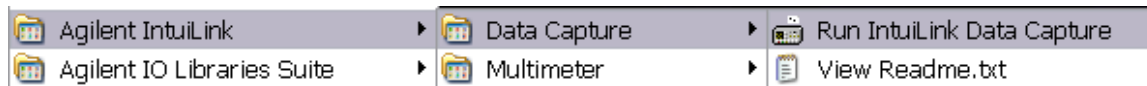


## Oscilloscope Waveform Capture to Word Processor

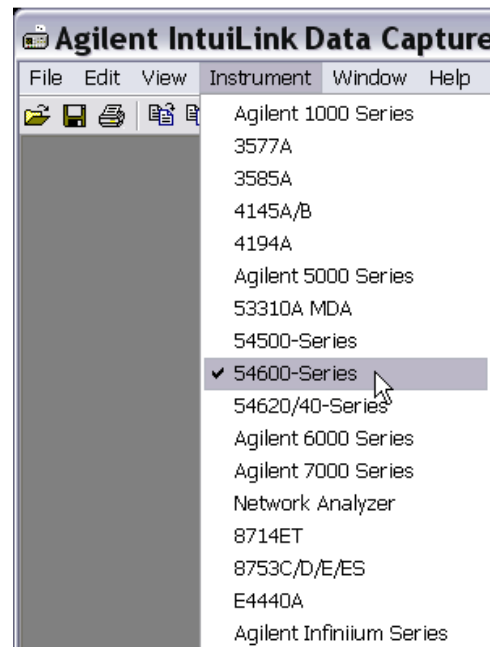
This guide should assist with successfully capturing waveforms from the oscilloscope in the Kansas State University at Salina Electronics Instrumentation Lab to a word processing program of the user's choice.

1. Turn on the HP oscilloscope.
2. Start the IntuiLink Data Capture program:



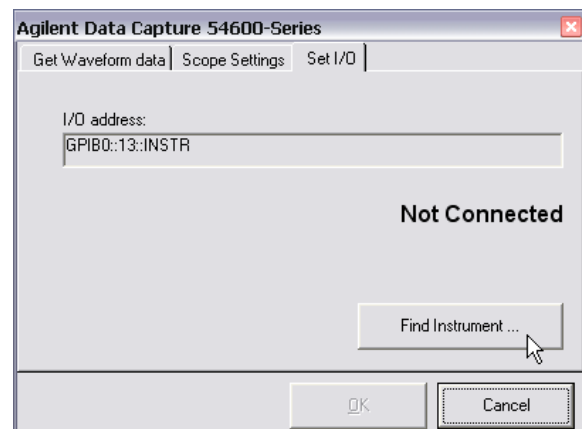
3. Select the instrument to interface with via the menu:

(in this case it will be the 54600 series)



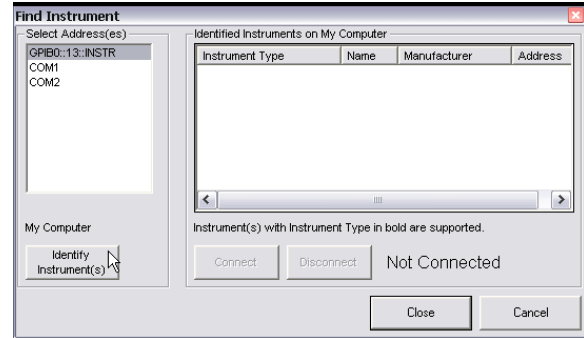
4. From the pop-up screen select the Find Instrument button on the Set I/O tab: (note the indication that an instrument is "Not Connected")

(a window should briefly appear that states "Searching Busses")



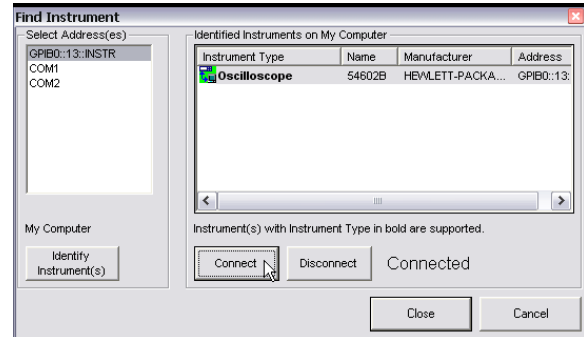
## Oscilloscope Waveform Capture to Word Processor

5. From the Find Instrument window, select the address of the proper instrument. By clicking the “Identify Instrument(s)” button the program will attempt to identify the instrument at the selected address(es) by a listing in the right-hand portion of the window.



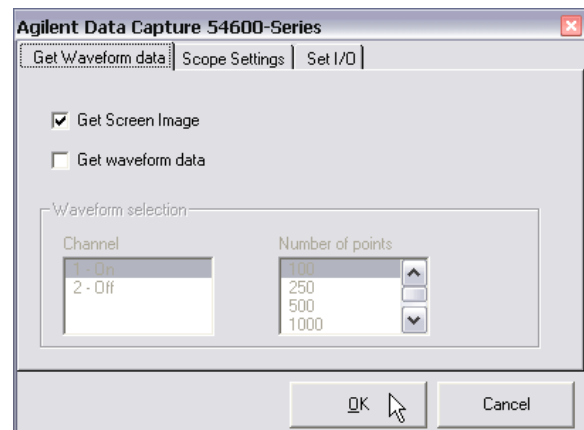
(oscilloscope should be GPIB address 13)

Select the oscilloscope in the right-hand window and click on the Connect button. Once the instrument has a connection the window should say “Connected” above the Close button as indicated here (also notice the green connection icon next to the instrument).



Upon completion, close the window.

6. Select the “Get Waveform Data” tab in the previously seen window (it should be on top once the Find Instrument window is closed). Check the checkbox for “Get Screen Image” and uncheck the checkbox for “Get waveform data” as shown. Click OK to have the program capture the screen image from the oscilloscope (including all unit/division & measurement settings)



## Oscilloscope Waveform Capture to Word Processor

7. The selected screen image can now be copied to the clipboard to be pasted into the word processing program. This can be accomplished by:

using the Copy button,

or selecting Copy from the Edit menu,

or pressing 'Ctrl+C'

Then the word processor's paste function will need to be invoked.

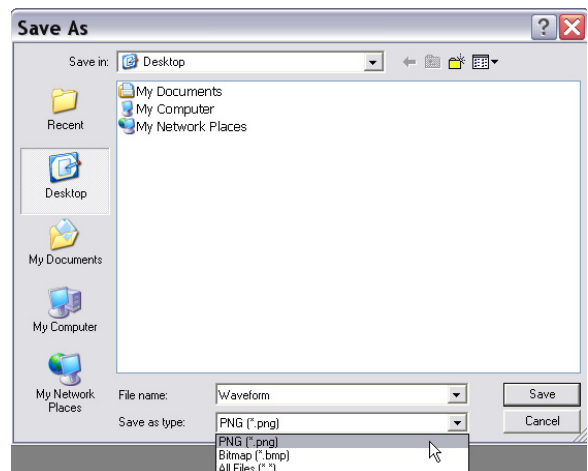
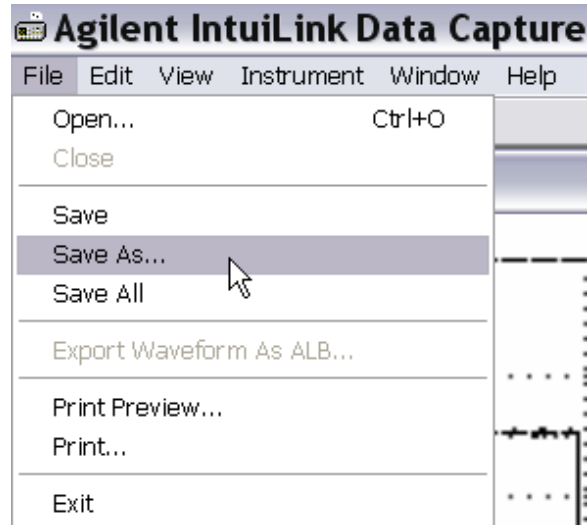
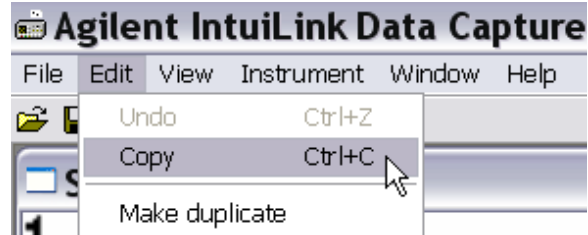
**Text should be added to describe the waveforms in the word processing program.**

The images of the waveforms can also be saved by selecting "Save As . . ." from the File menu

PNG is the recommended format.



or



## Oscilloscope Waveform Capture to Word Processor

8. Once the oscilloscope has been successfully configured with these steps, additional screen images can be captured by:

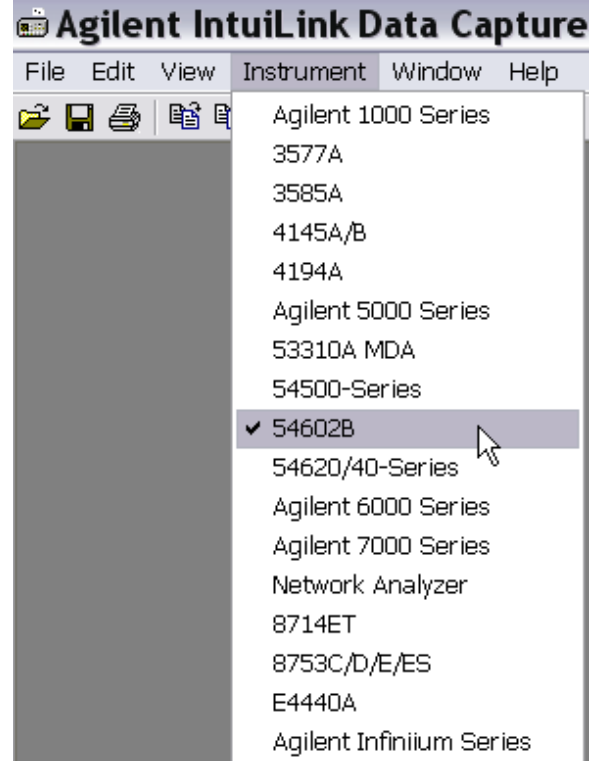
using the Get Data button,

or selecting the oscilloscope from the Instrument menu,

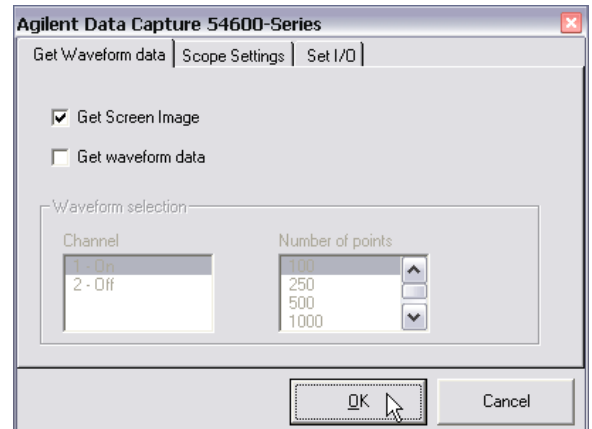
and use the data capture window again



or



and



If you want to capture the data points from a waveform for saving to a spreadsheet, or to examine the values, select the “Get waveform data” and then save this data as a CSV or tab delimited file.

**Be sure that files are backed up to an external location (all data on the lab computer hard drive will be lost upon reboot!)**